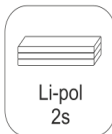


Bücker Jungmann



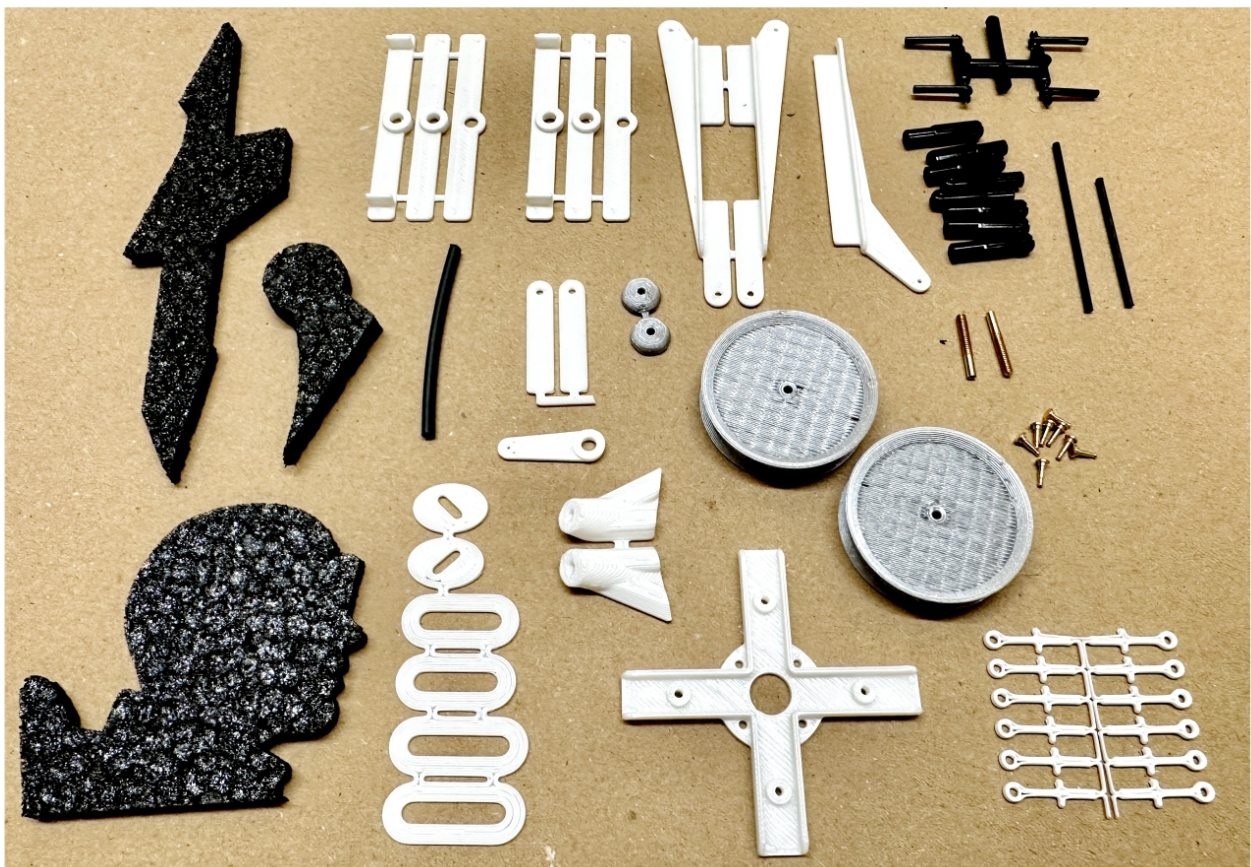
Carbon fiber Included:

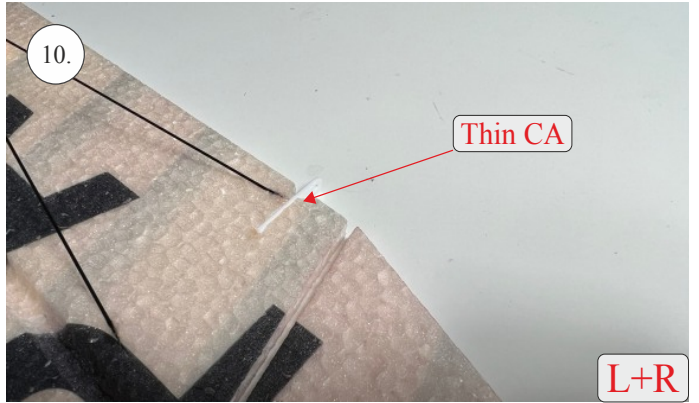
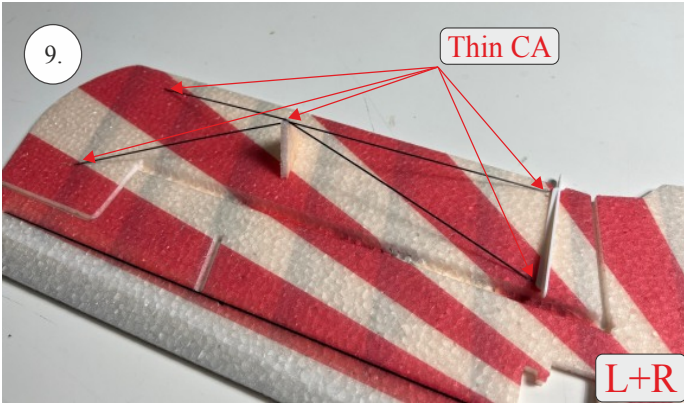
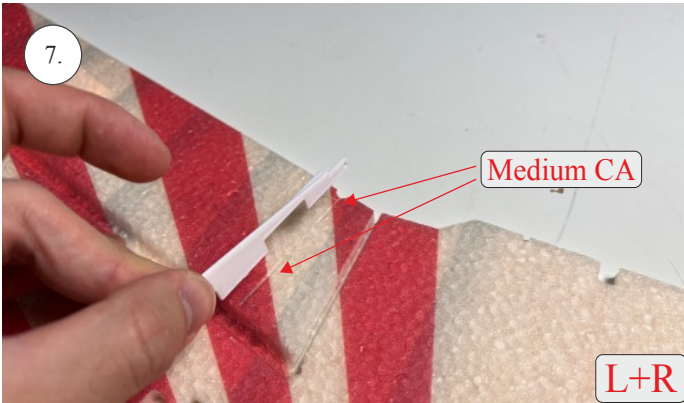
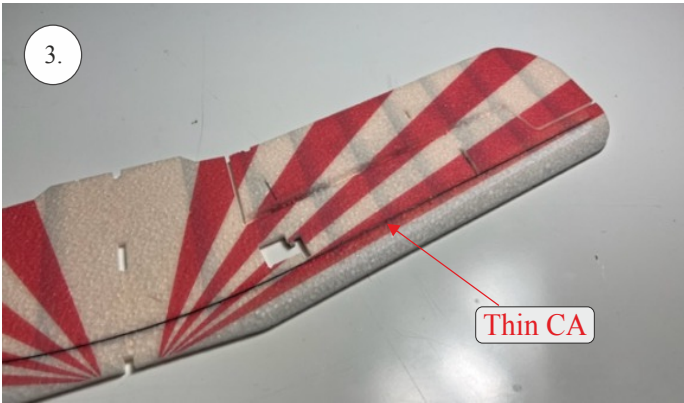
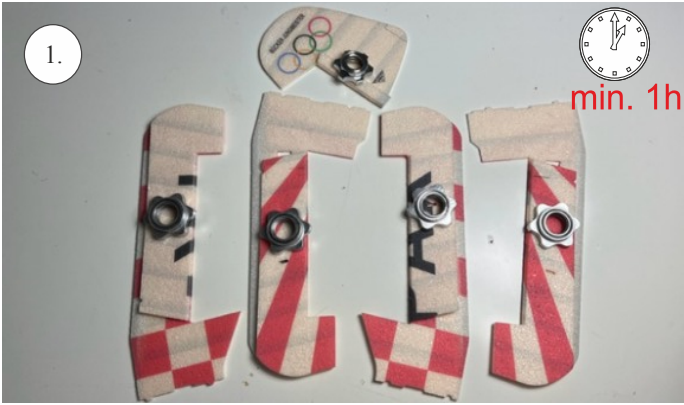
- 2 pc's = .5mm x 3mm x 750mm
- 2 pc's = .5mm x 3mm x 320mm
- 1 pc's = .5mm x 3mm x 200mm
- 10 pc's = .8mm x 500mm
- 1 pc = 3mm 330mm Tube
- 1 pc = 1mm x 330mm
- 4 pc's = 1mm x 500mm
- 2 pc's = 1.5mm x 2.5mm x 225mm
- 2 pc's = 1.5mm x 275mm
- 2 pc's = 1.2mm x 200

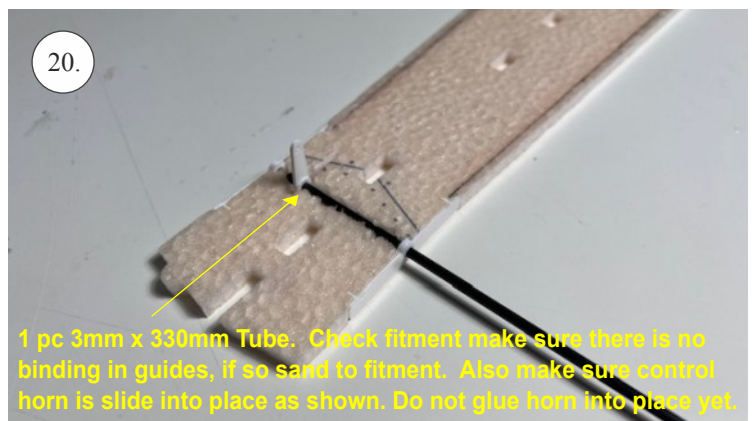
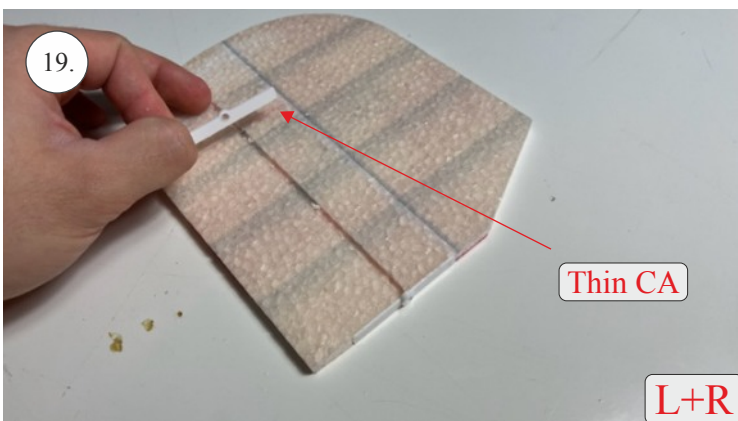
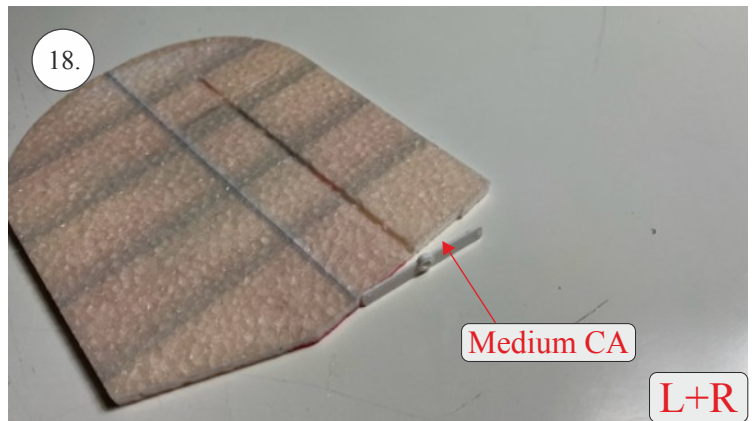
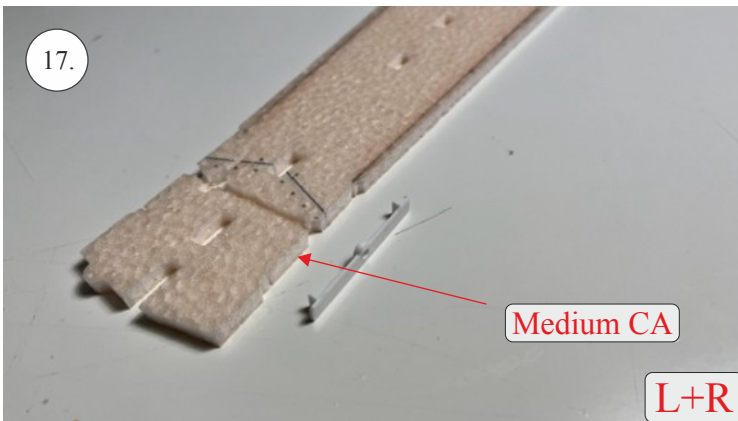
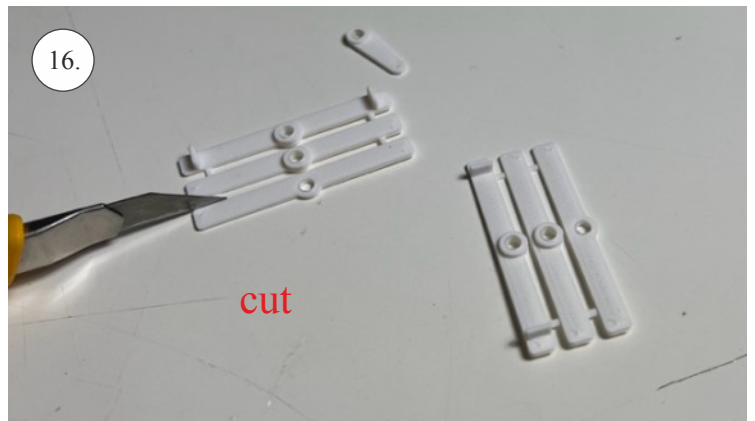
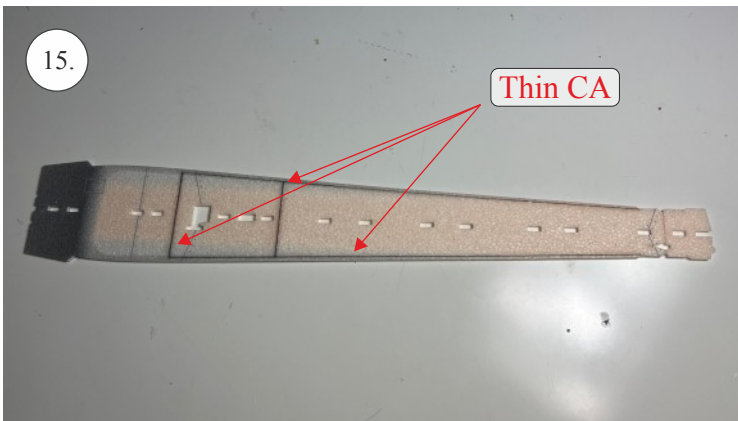
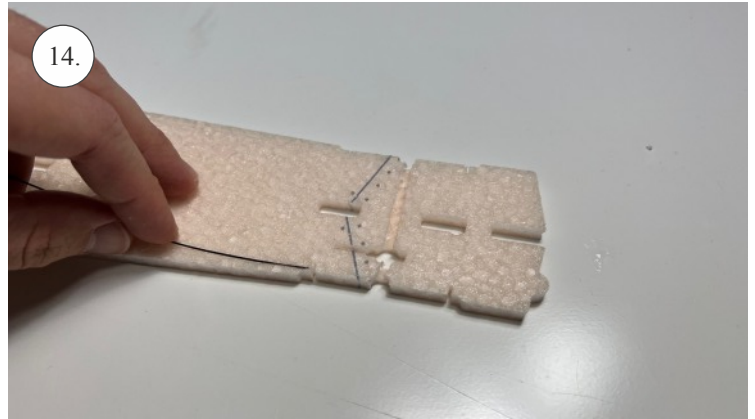
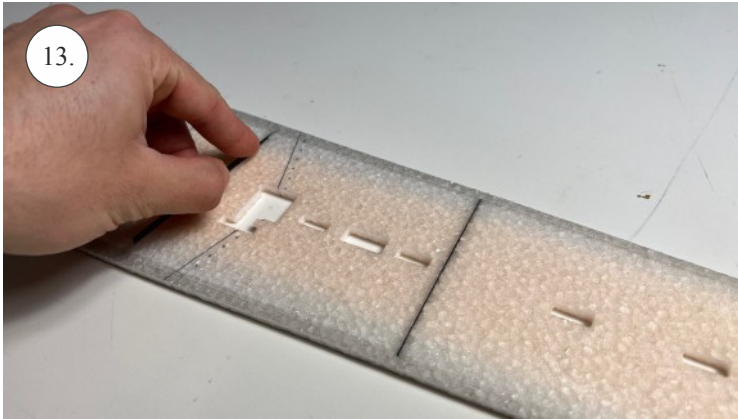
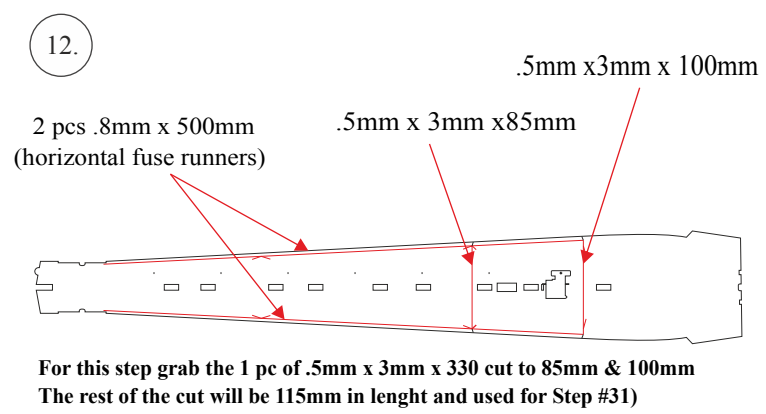
Carbon Fiber locations and size/cuts reference guide:

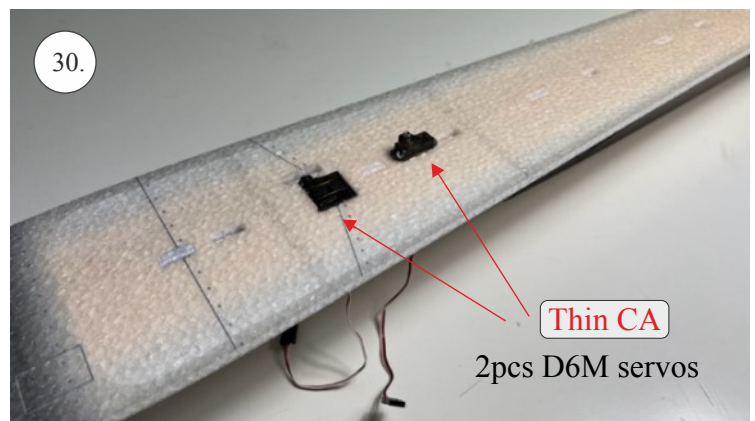
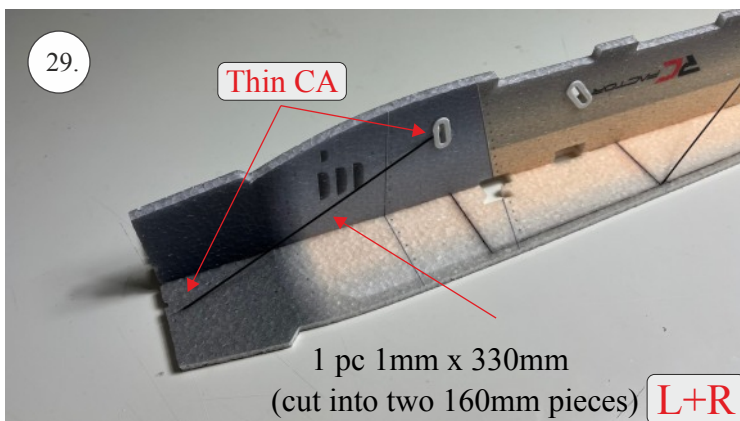
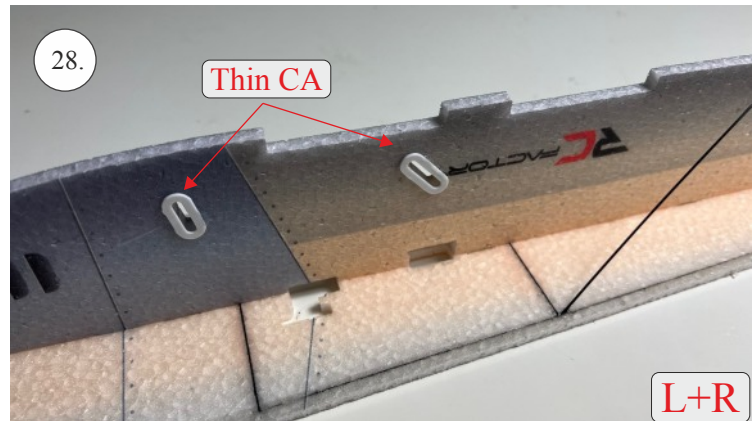
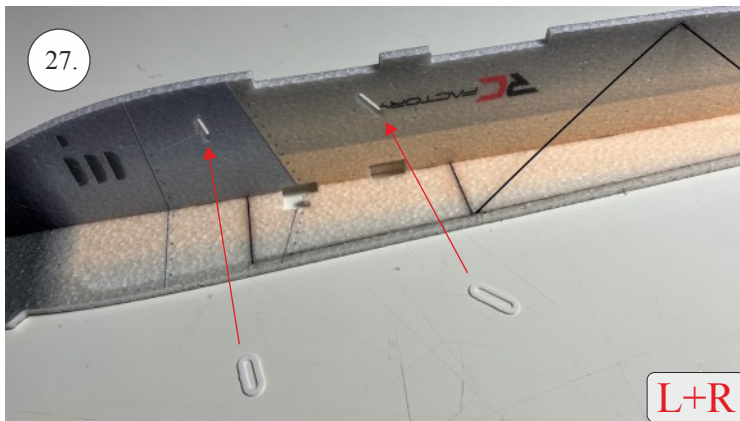
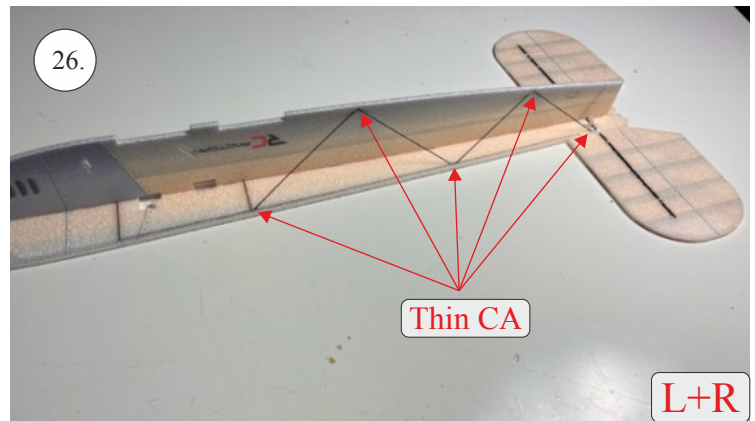
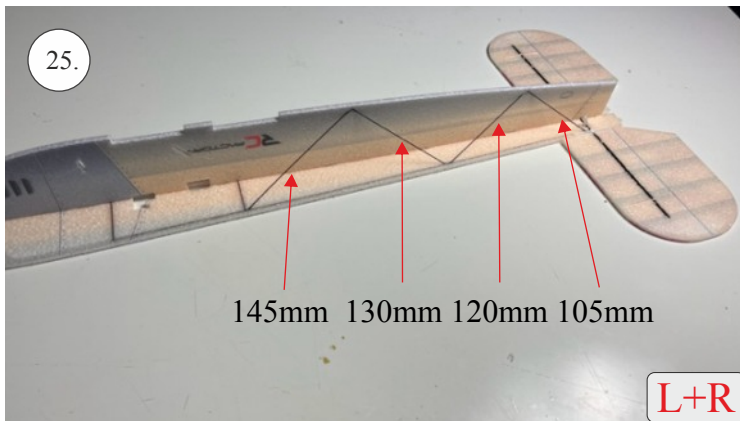
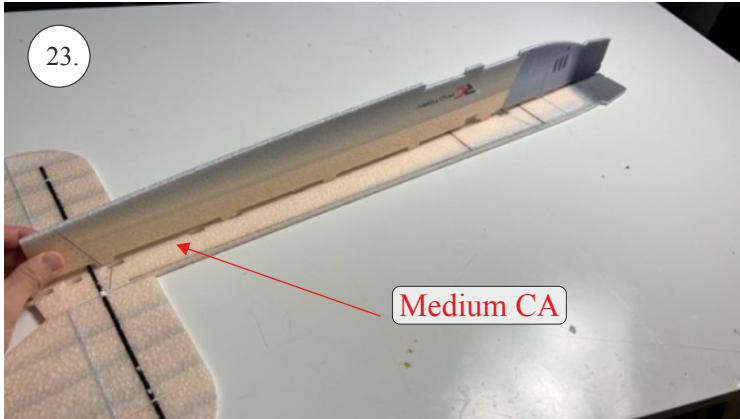
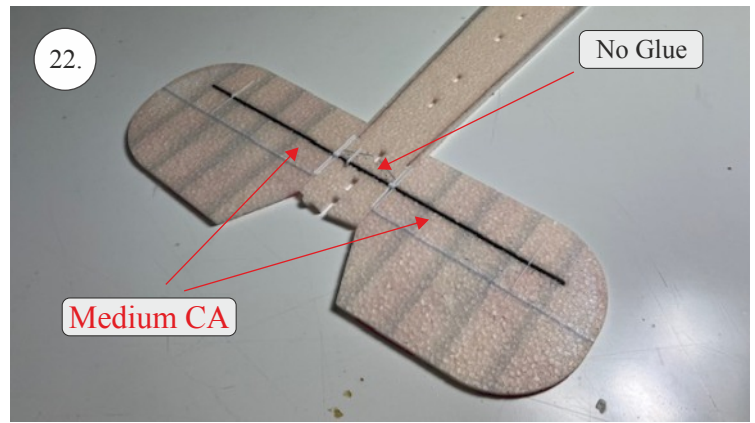
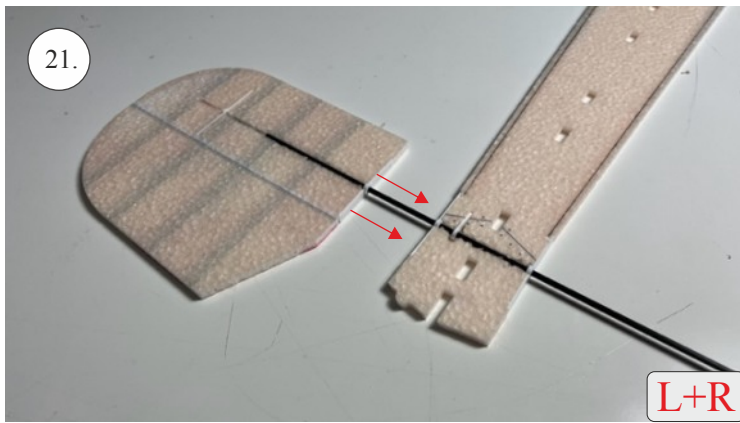
- 2 pc's = .5mm x 3mm x 750mm **Step #2-3** Wing Spars
- 4 pc's = .8mm x 500mm **Step #8-9** (Aileron wing supports)
- 2 pc's = .8mm x 500mm **Step #12** (horizontal fuse runner supports)
- 1 pc's = .5mm x 3mm x 330 **Step #12** (horizontal fuse supports) (cut to 85mm & 100mm, rest of 115mm is for **Step #31**)
- 1 pc = 3mm 330mm Tube **Step #20**
- 2 pc's = .8mm x 500mm fuse lateral truss bracing **Step #24-26** (cut to length)
- 1 pc = 1mm x 330mm **Step #29** (cut into two 160mm pieces)
- 1 pc = .5mm x 3mm x 115mm **Step #31** (Vertical top fuse brace)
- 2 pc's = .5mm x 3mm x 200mm **Step #37** (wing strut braces)
- 4 pc's = 1mm x 500mm **Step 43-44** (Inner Wing to fuse bracing)
- 2 pc's = 1.5mm x 2.5mm x 225mm **Step 46-47** (landing gear)
- 2 pc's = 1.5mm x 275mm **Step 50** (landing gear braces)
- 1 pc = 1.5mm x 30mm **Step 56** Axles (cut in half for 15mm)
- 1 pc = 1.5mm x 40mm **Step 69** Control rod assemble (cut in half for 20mm)
- 1 pc = .8mm x 500 **Step 76** (Elevator push rod)
- 1 pc = .8mm x 500 **Step 83** (Rudder push rod)
- 2 pc's = 1.2mm x 200 **Step 88** (cut to size, around 190mm)

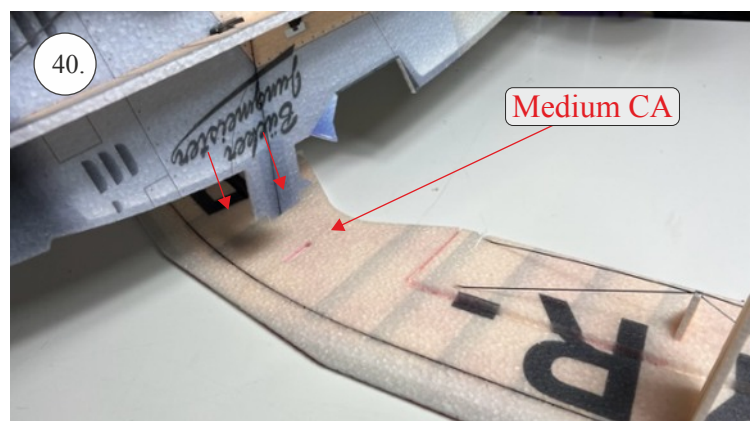
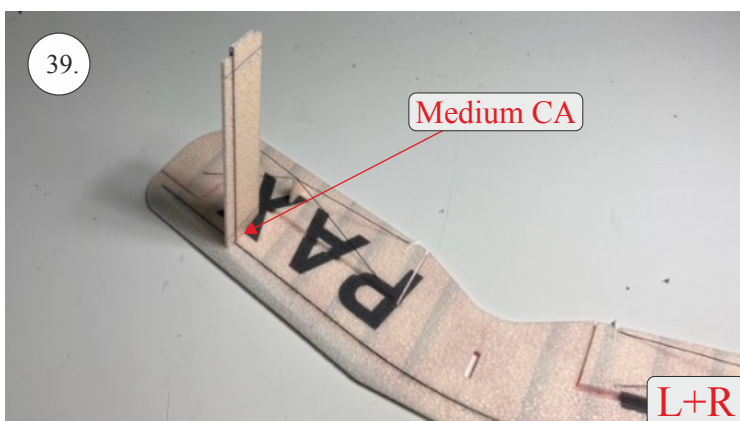
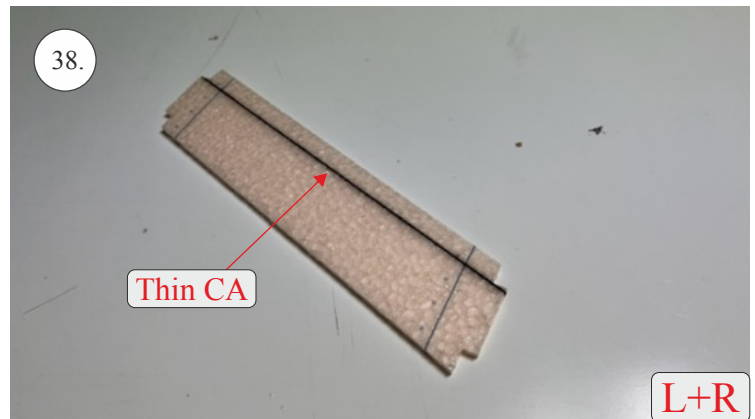
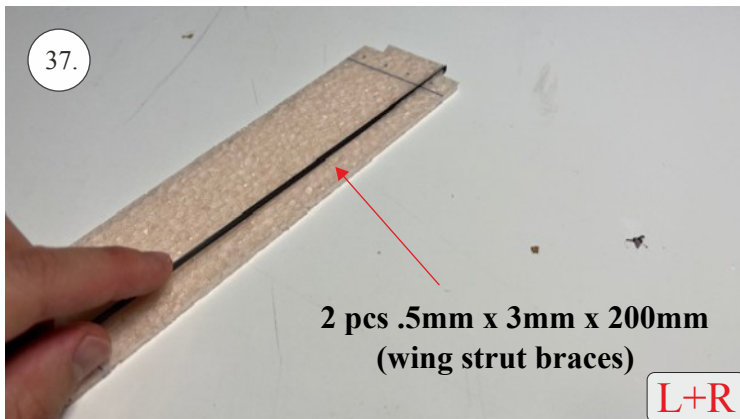
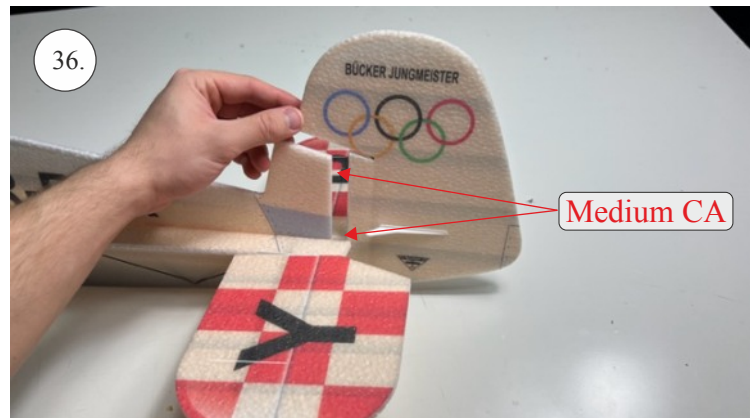
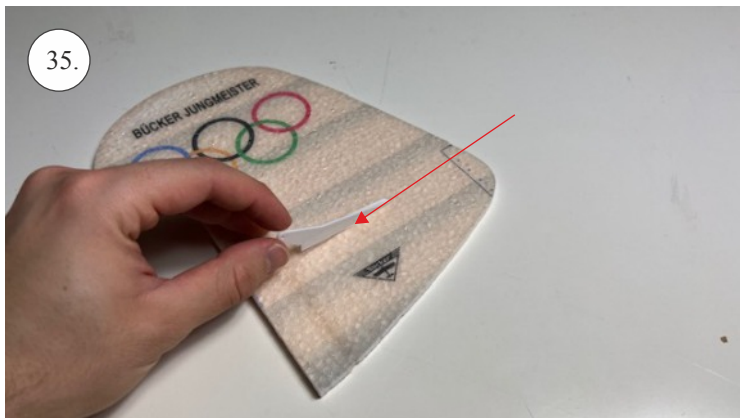
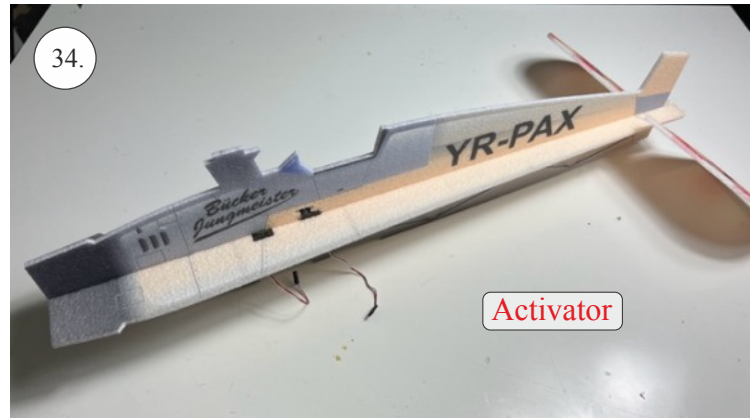
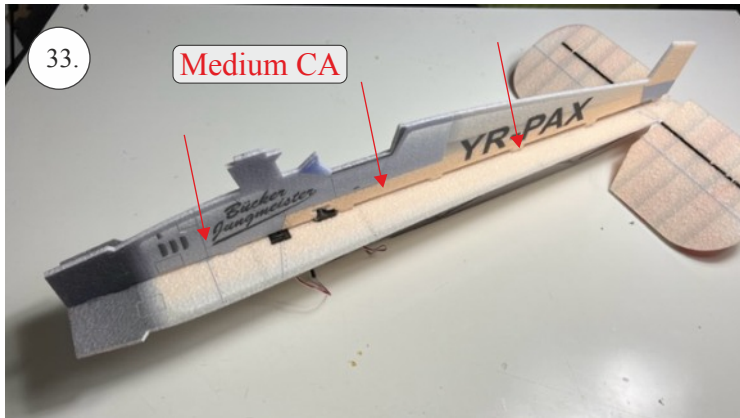
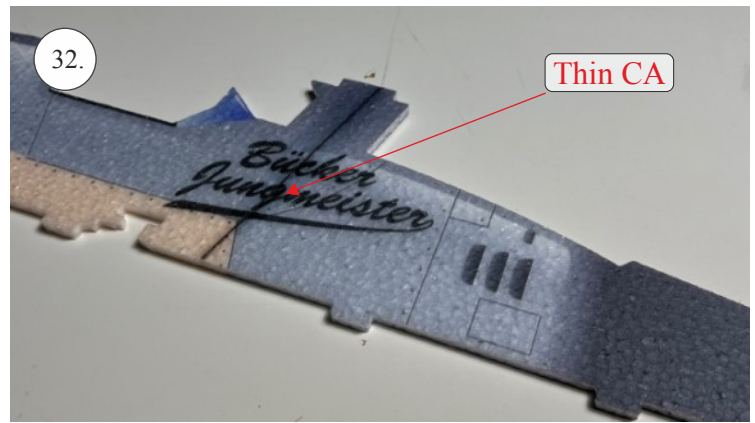
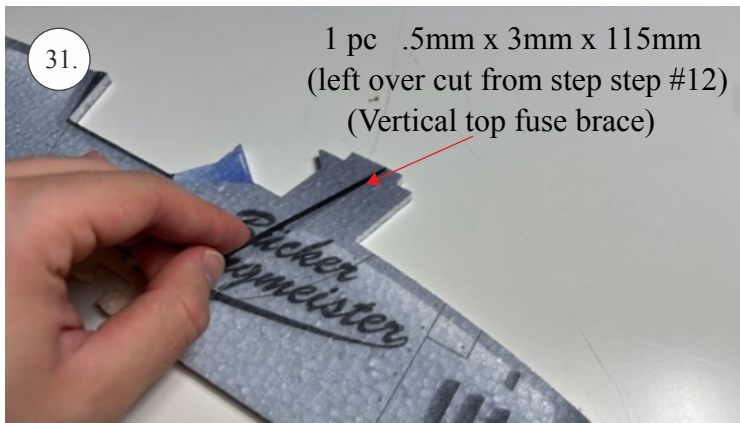
Hardware bag parts shown below

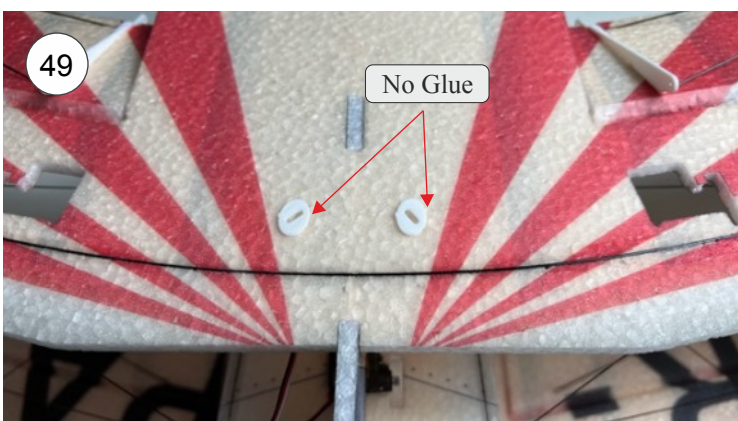
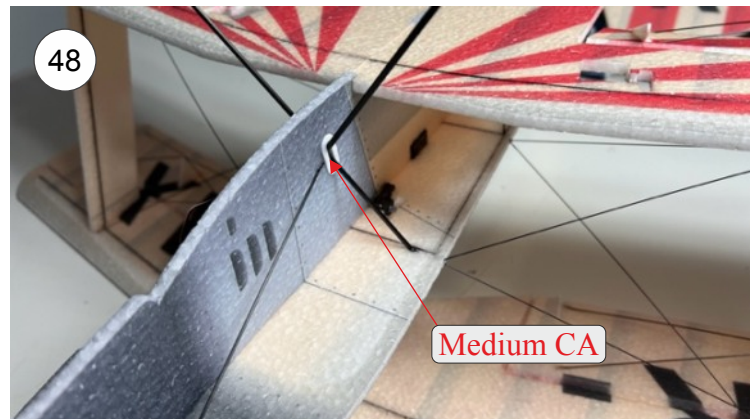
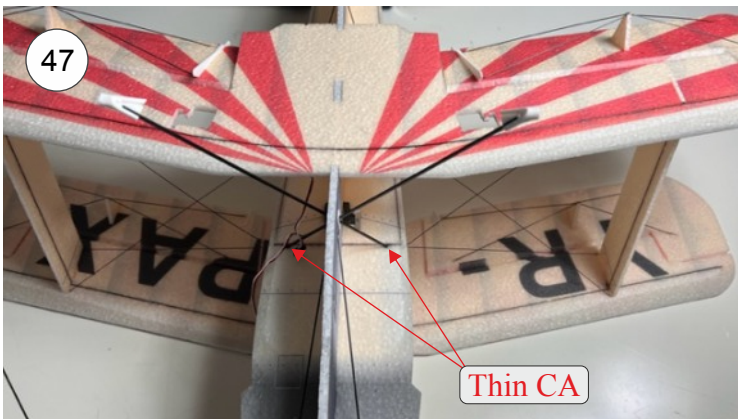
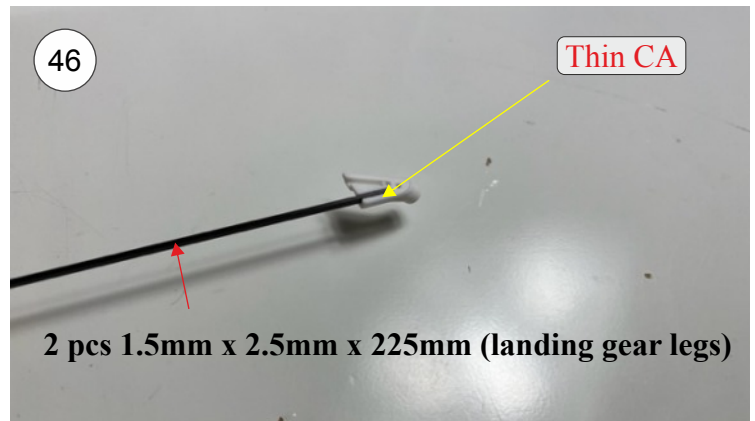
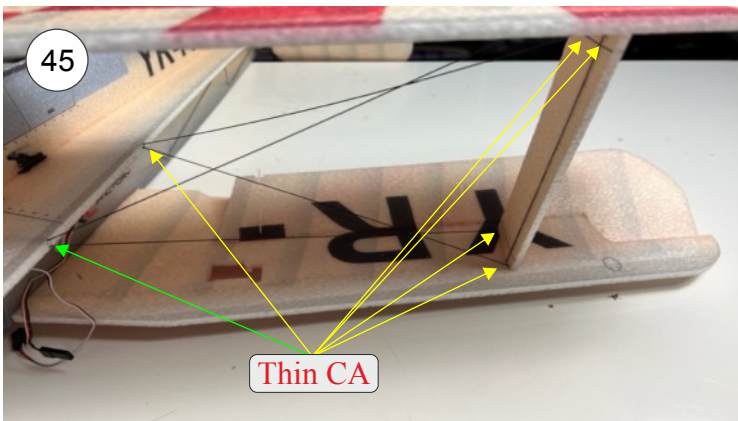
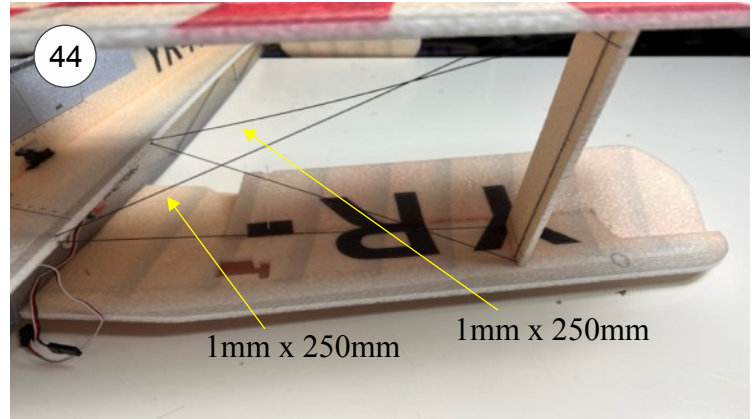
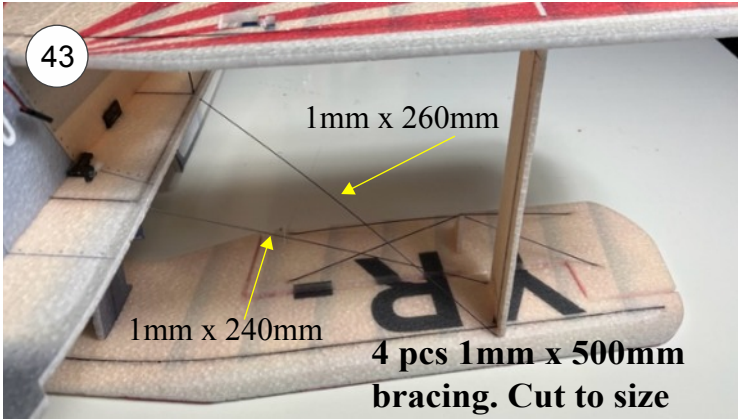
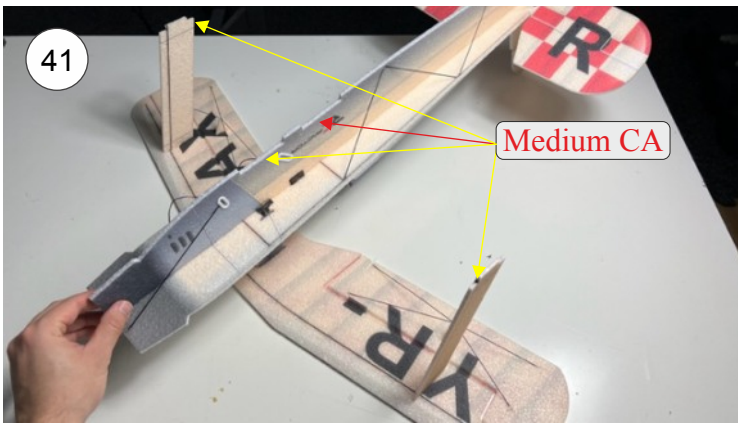


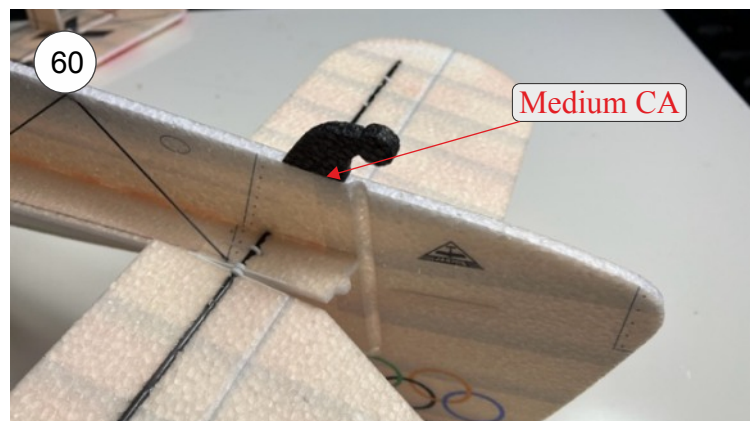
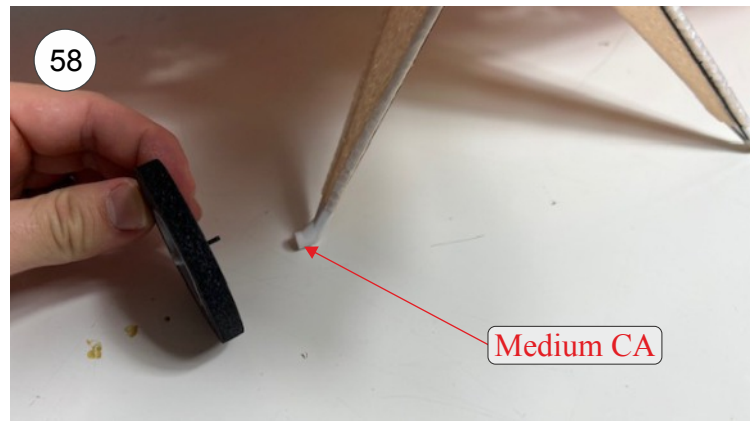
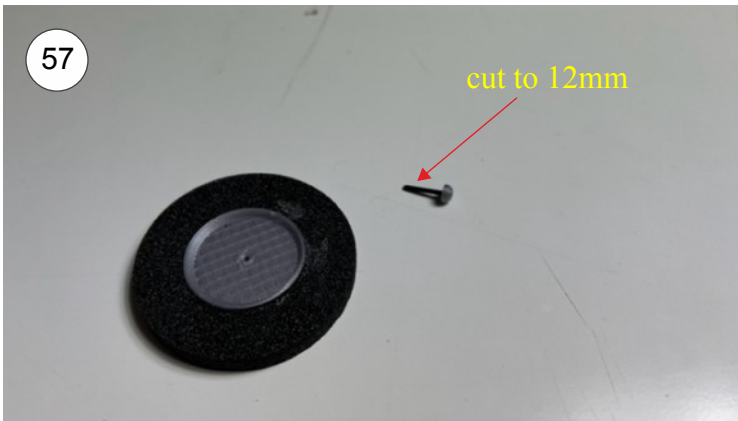
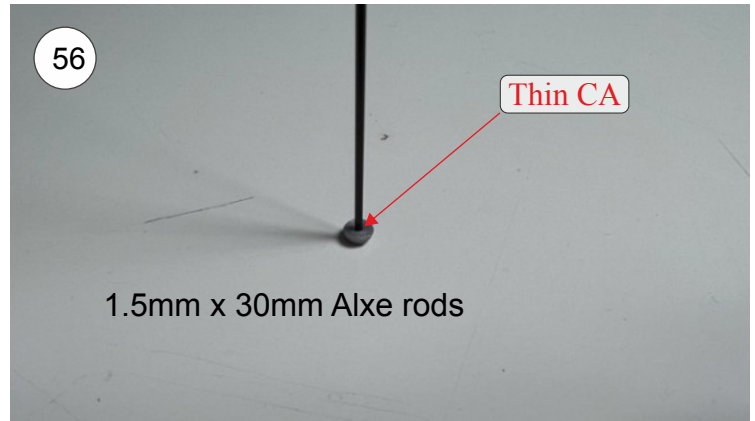
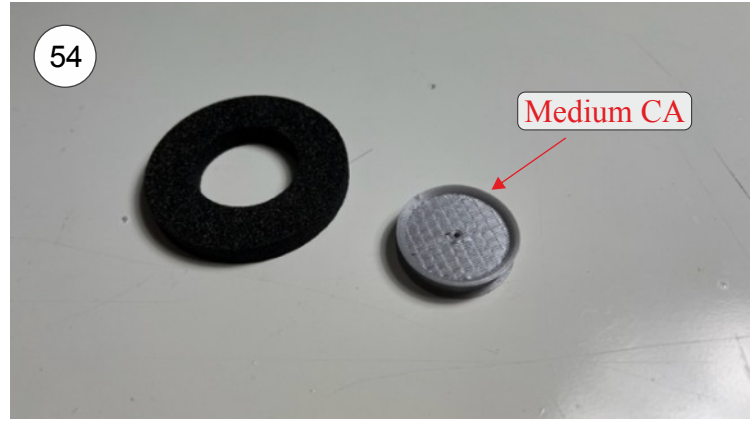
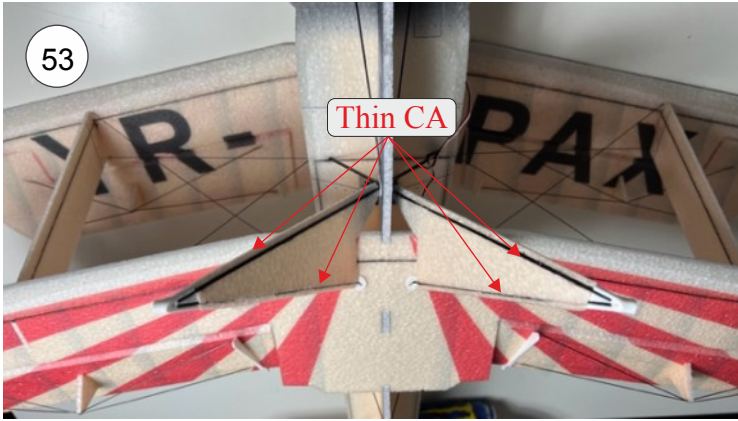
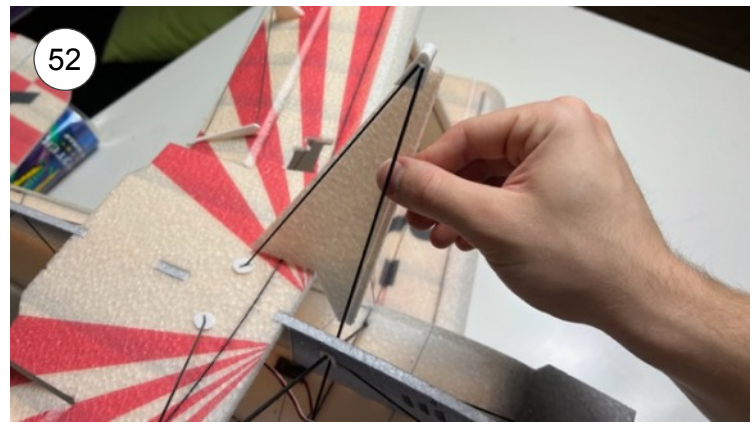
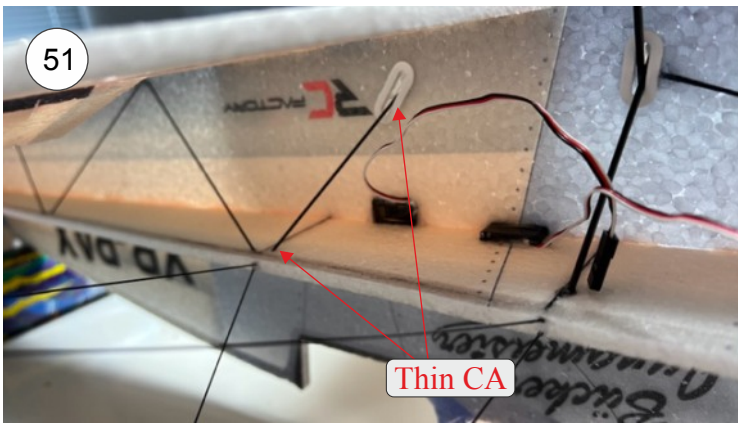


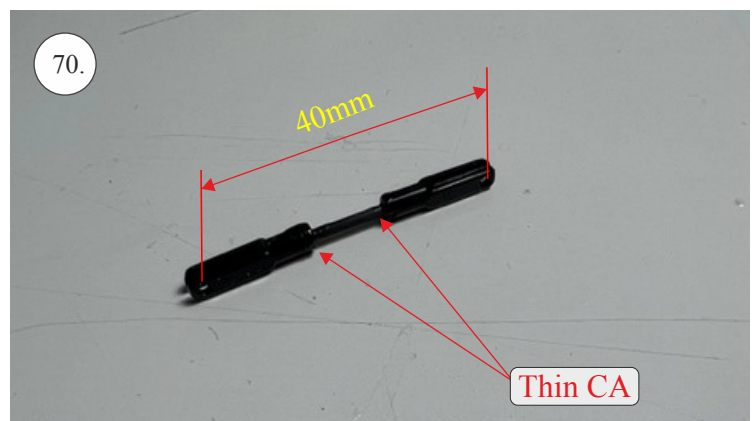
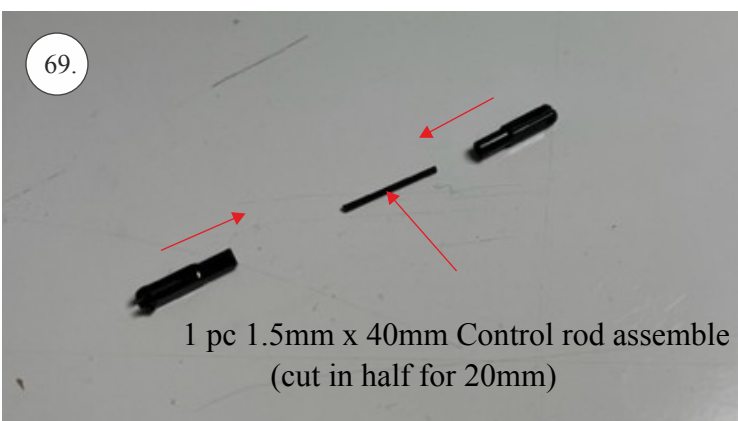
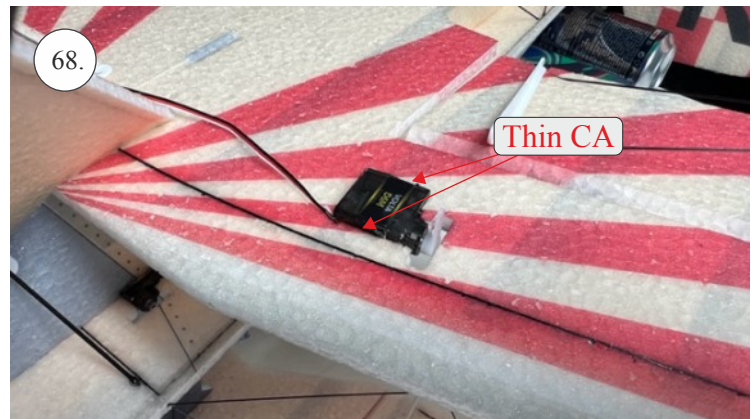
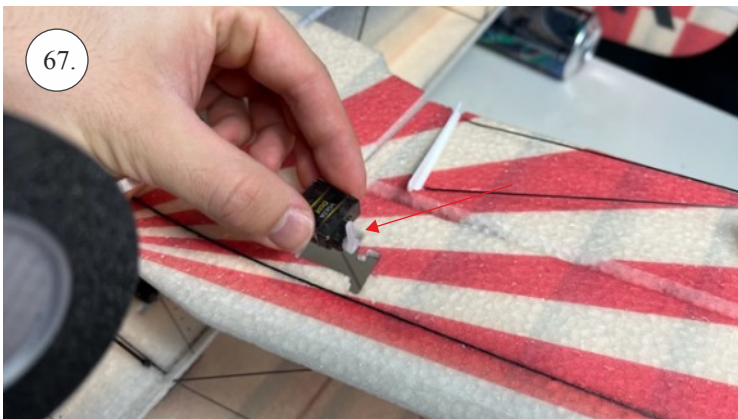
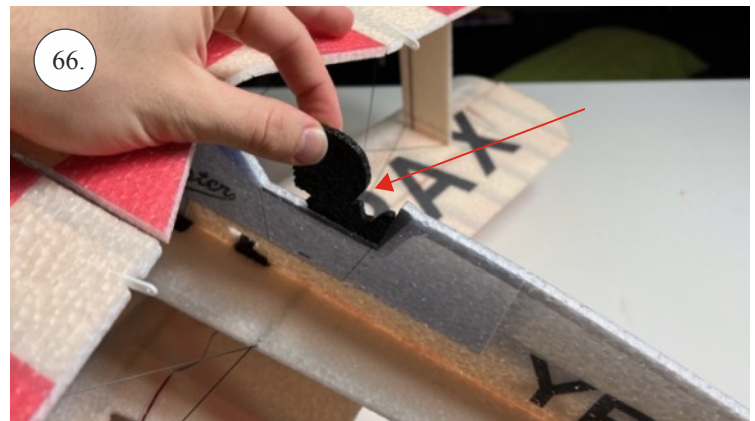
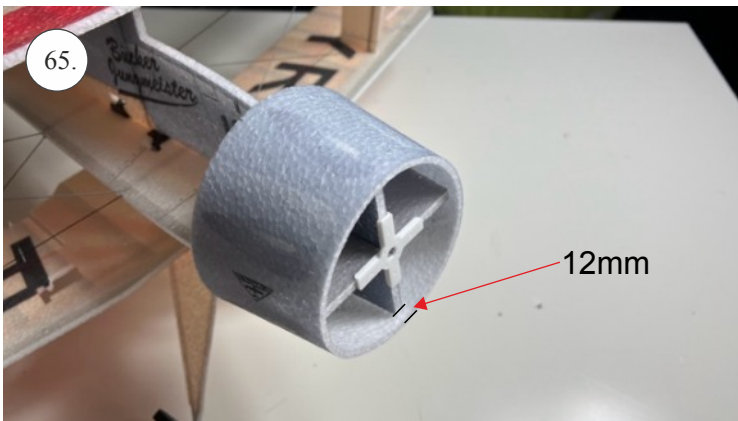
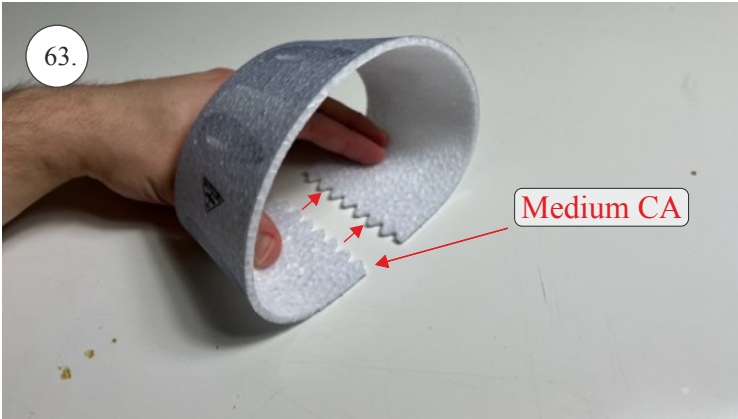
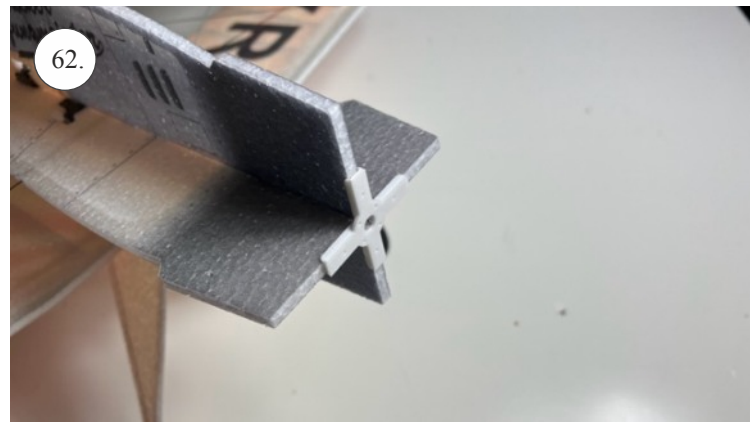
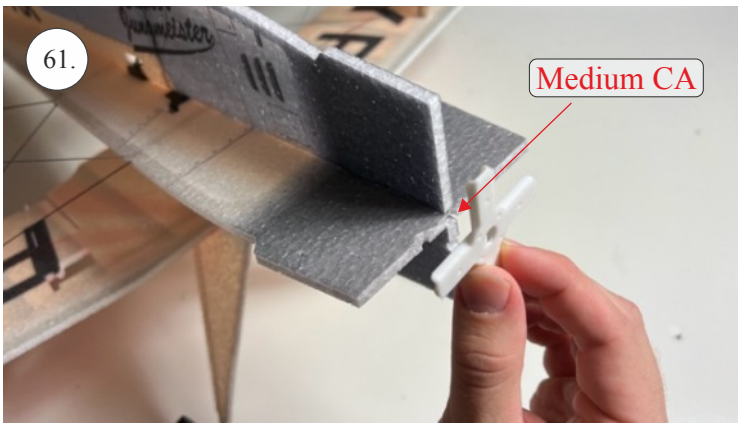


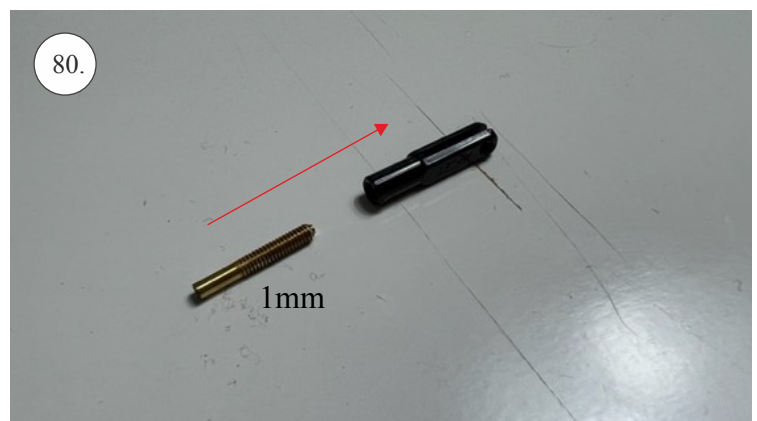
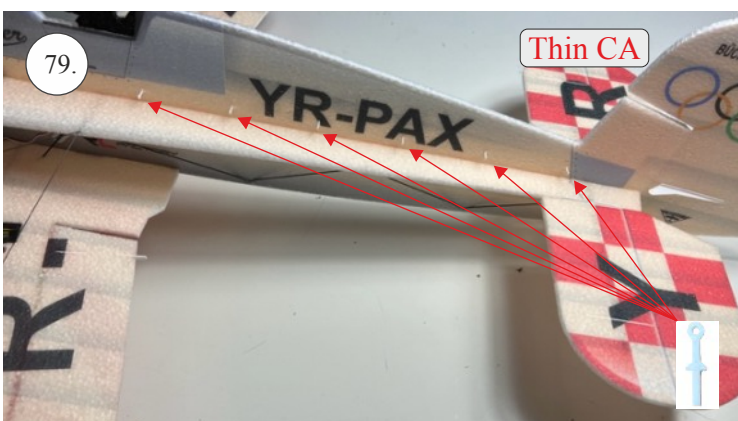
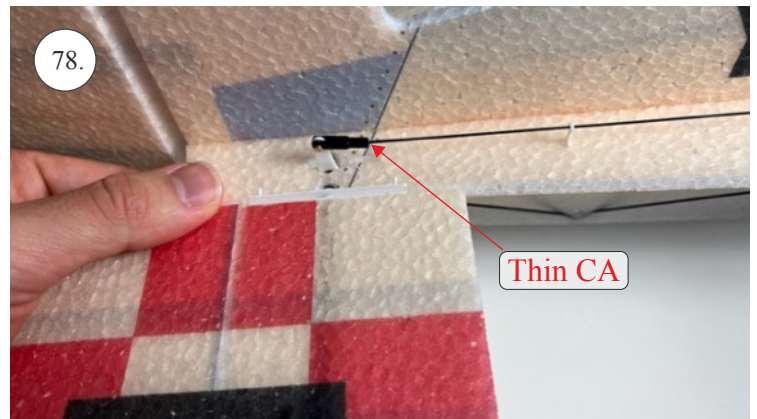
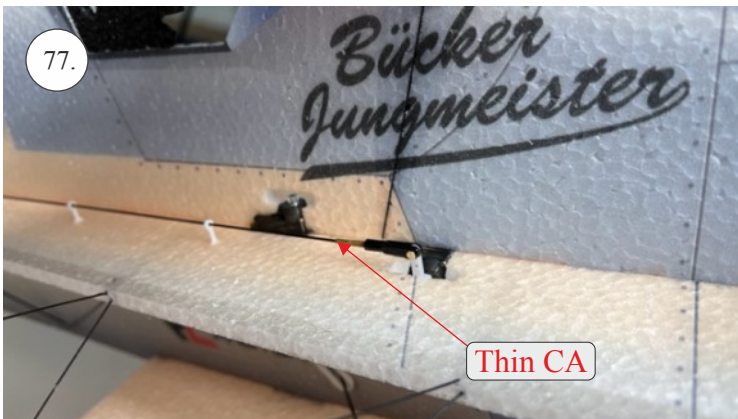
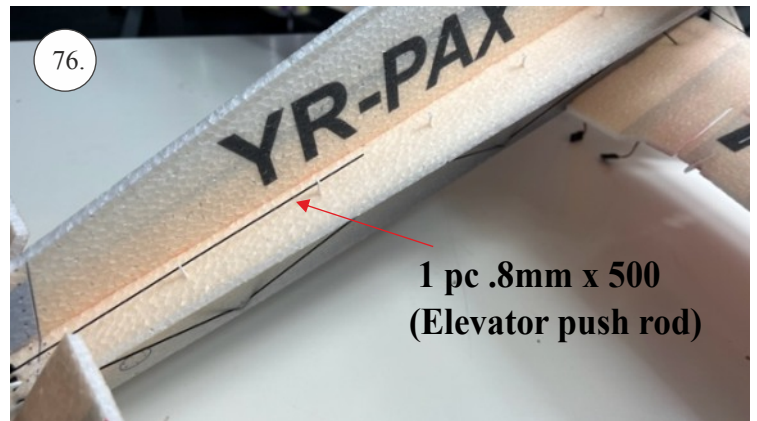
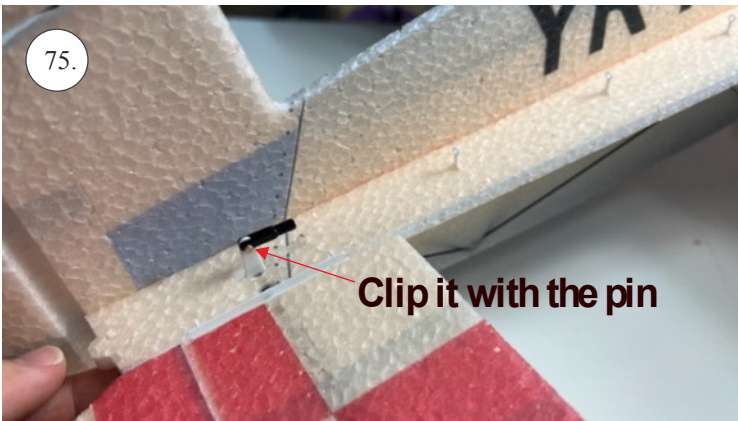
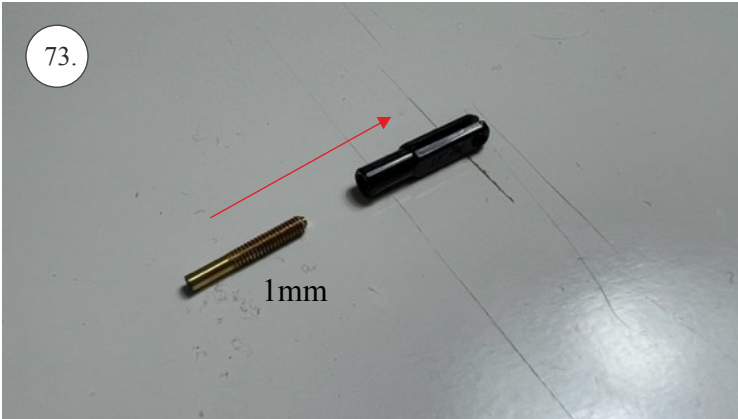
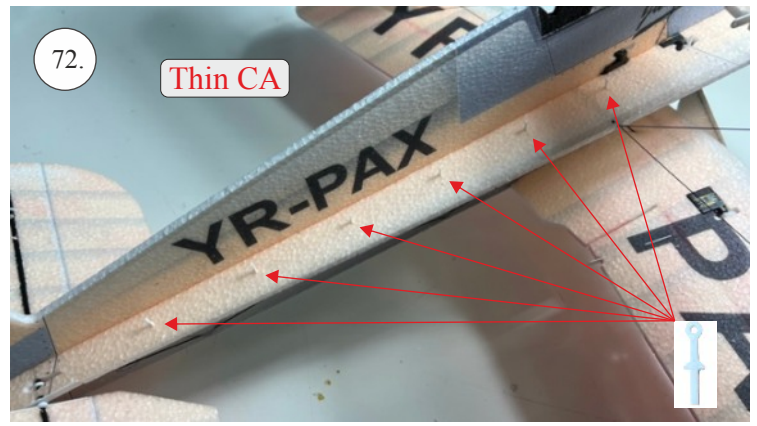
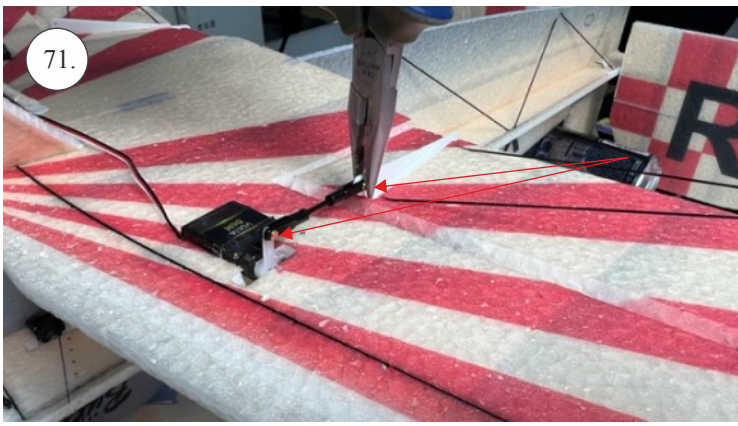


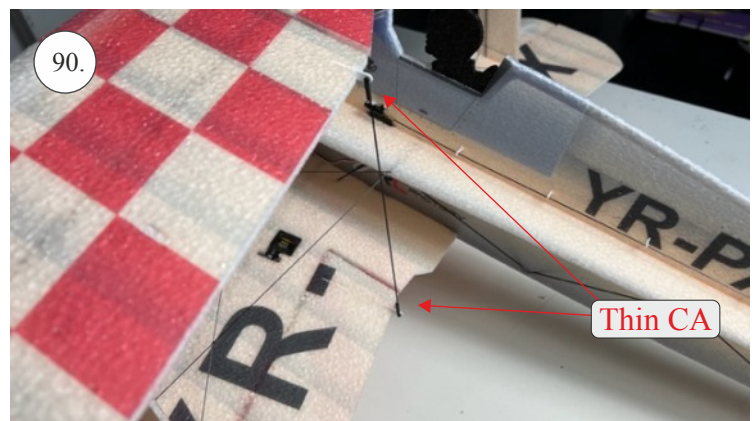
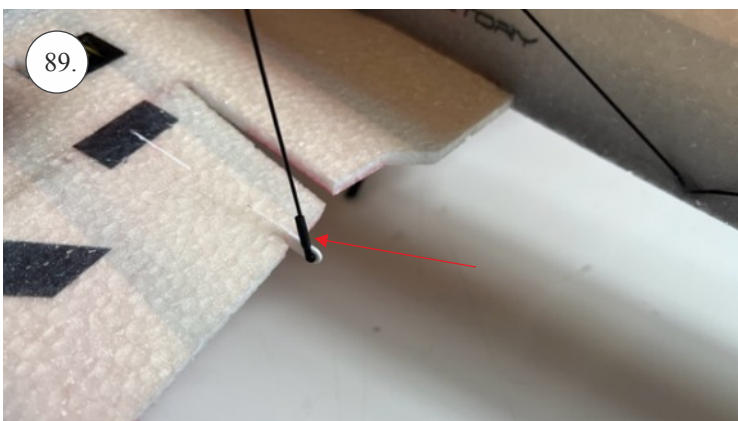
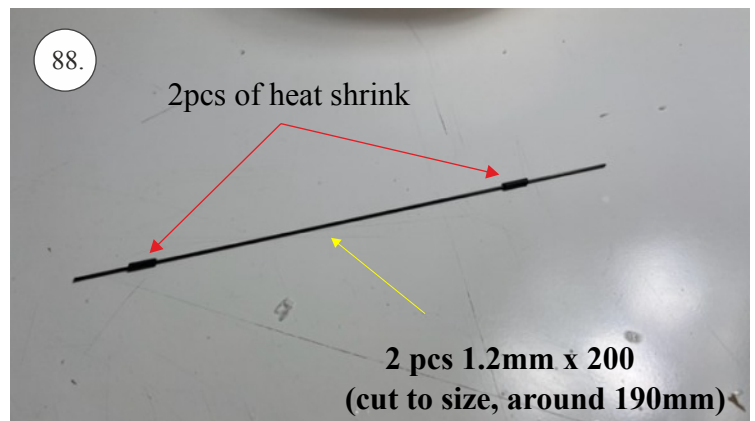
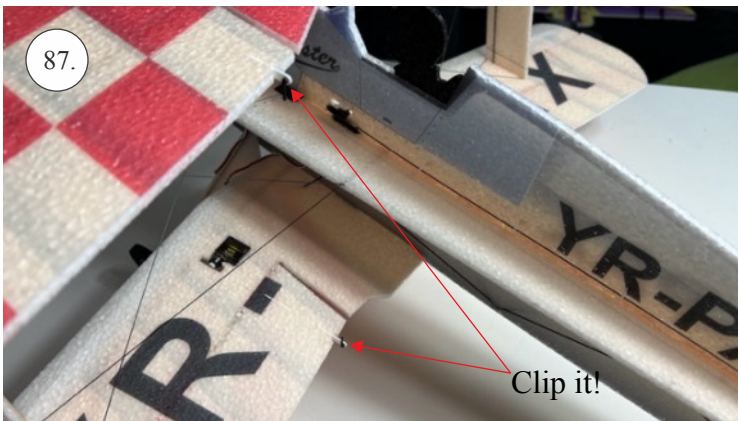
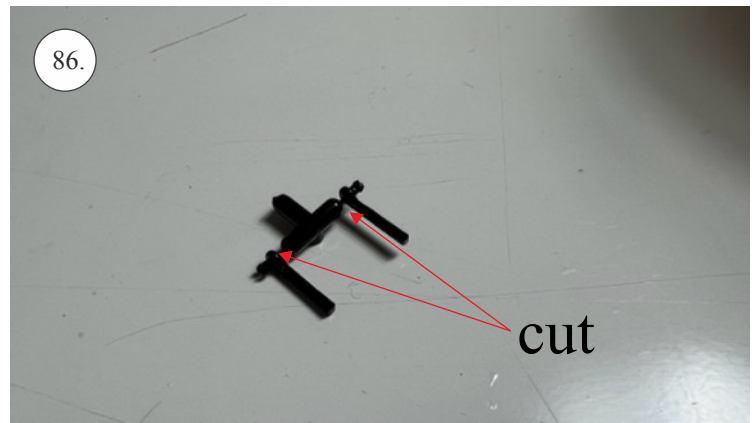
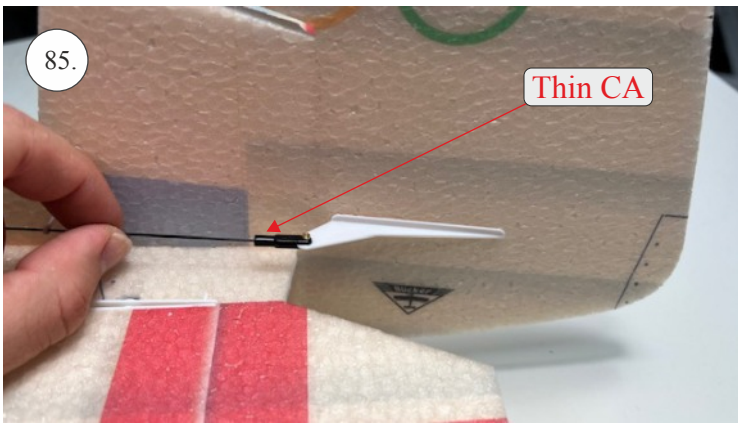
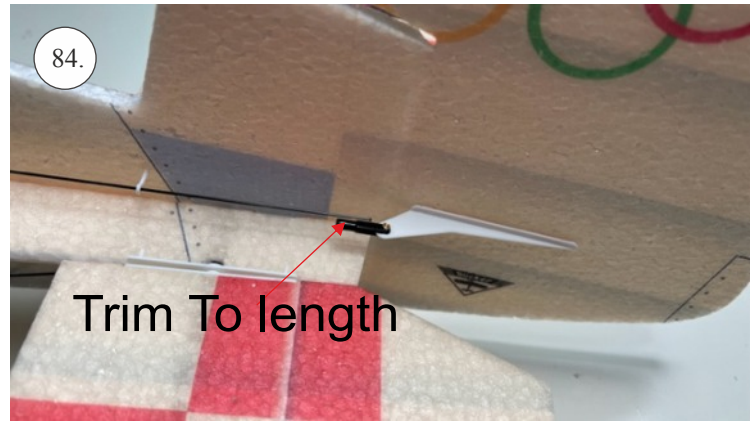
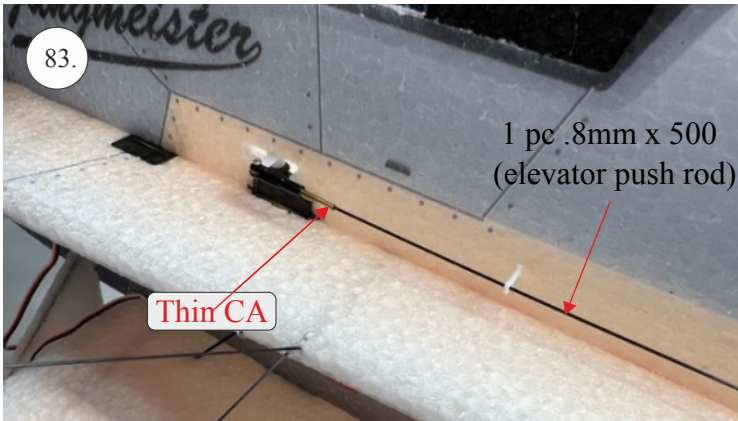
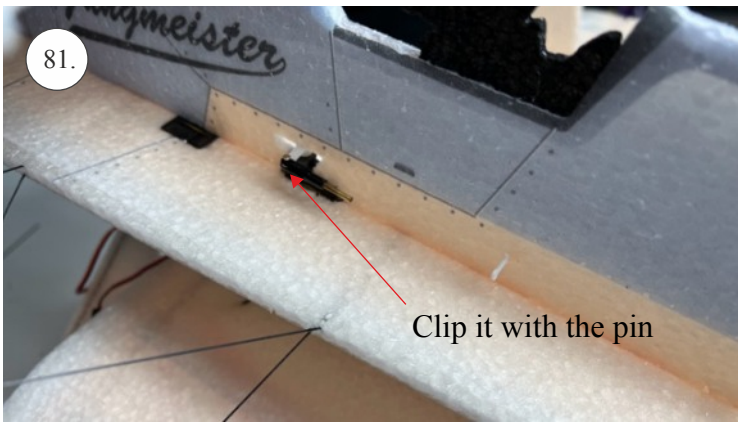


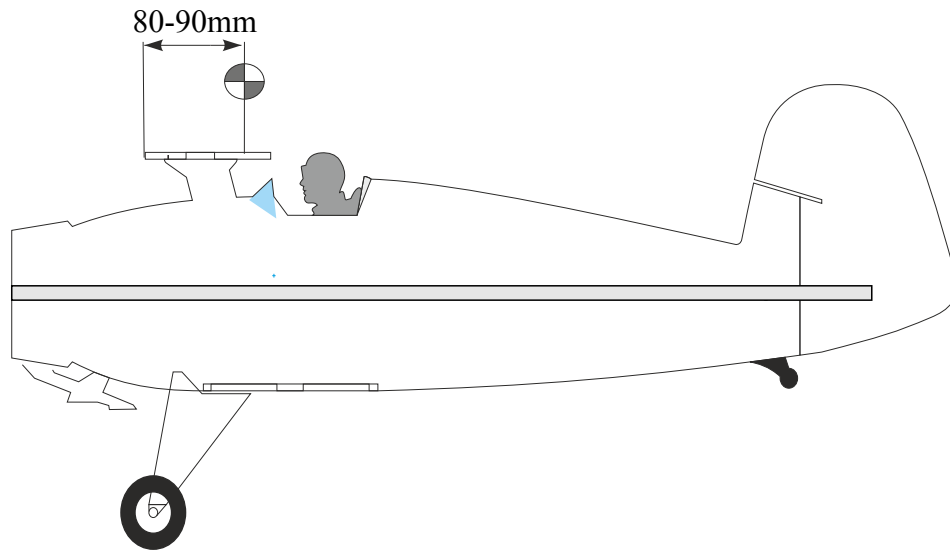
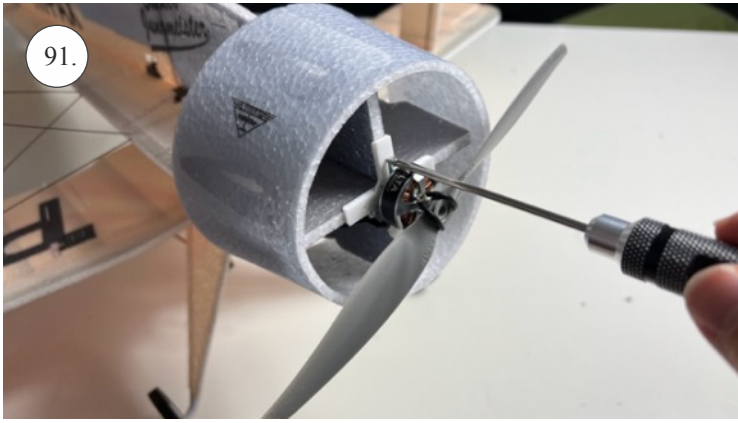












We wish you many happy flying hours with the Buecker
Your RC Factory team